



Control & Signalling Devices

22.5 mm



EMS Controls Inc.
840 Pamela Drive
Punta Gorda, FL 33950
Tel: 941-637-9669
Fax: 941-637-9670
Email: info@switchingdevices.com

RoHS
Compliant




Contents

Control & Signalling Devices	
Characteristics	3
Non Illuminated Push Buttons	4
Non Illuminated Double Headed Push Buttons, Selector Switches & Key Switches	5
Illuminated Push Buttons & Selector Switches	6
Assemblies for illuminated, Non-Illuminated type Push Buttons & Selector Switches	7
Pilot Light Heads & Bodies	8
Accessories	9
Accessories & Legend Plates	10
Dimensions / Complete Units' Reference	11-12
Control Stations	
Characteristics	13
Empty Enclosures for Plastic & Metal Control Stations	13
Plastic Operating heads for use with RCIP & RCIM Enclosures	14
Plastic Selector heads for use with RCIP & RCIM Enclosures	14
Plastic Key heads for use with RCIP & RCIM Enclosures	14
Contact Blocks for use with RCIP Enclosures	15
Metal Operating heads for use with RCIP & RCIM Enclosures	15
Metal Selector heads for use with RCIP & RCIM Enclosures	16
Metal Key Selector heads for use with RCIP & RCIM Enclosures	16
Contact Blocks for use with RCIM Enclosures	16
Dimensions	16
Control & Signalling Devices (Plastic Series)	
Push Buttons Actuators with Carrier - Non-Illuminated.....	17
Push Buttons Actuators -Illuminated Flush without Series Resistor ..	17
Push Buttons Actuators -Illuminated Flush with Series Resistor.....	17
LED Type Push Buttons Actuators - Illuminated Flush.....	18
Push Buttons Actuators -Illuminated Projecting without Series Resistor.....	18
Push Buttons Actuators -Illuminated Projecting with Series Resistor.....	18
LED Type Push Button Actuators -Illuminated Projecting.....	18
Selector Switch Actuator with Carrier.....	19
Key Actuators with Carrier.....	19
LED Type Pilot Lamp (Integral CKT & Cluster Type).....	19
Pilot Lamps with Transformer.....	19
Pilot Lamps with Series Resistor.....	20
Pilot Lamps with Series Resistor & Diode.....	20
Pilot Lamps without Series Resistor.....	20
Voltage Code for Pilot Lamps.....	20

Control & Signalling Units ϕ 22.5mm (fixing)

Characteristics

General Characteristics

Products	Push Buttons, Selector Switches, Latching Mushroom Head Push Buttons, Pilot Lights & Illuminated Push Buttons
Reference Standard	IEC 60947-5-1, EN 60947-5-1, IEC 337-1, UL 508, CSA C-22-2 n° 14
Approval	
Protection Degree	IP 65 / IP 66 according to IEC 60947-1; NEMA4, 4X
Pollution Degree	3
Temperature	-40°C ~ + 70°C (Storage) -25°C ~ +70°C (Working)
Vibration Resistance	Mushroom head Push Buttons: 8g, Other Push Buttons & Pilot Lights: 15g (40 to 500 Hz) confirming to IEC 68-2-6
Shock Resistance conforming to IEC 68-2-27	Push Buttons : 70g, Mushroom Head Push Buttons: 15g, Selector Switches : 200g
Working Position	All working positions are allowed
Mechanical Life	Push Buttons & Selector Switches 1 million operations, Emergency Mushroom Push Buttons 300,000 operations

Contact Elements Characteristics

Rated Thermal Current I_{th}	10A
Rated Insulation Voltage U_i	500V conforming to IEC 60947-1, UL 508 & CSA 22-2 n° 14
Insulation Category	Group C conforming to NF C 20-040, VDE 0110
Operating Force	Push Buttons - 1 'NO' = 10N, 1 'NC' = 8N Additional contacts - 'NO' = +5N, 'NC' = +3N
Dielectric Strength	2.5KV for 1 minute
Insulation Resistance	2M Ohm min (500 VDC)
Initial Contact Resistance	\leq 25 milli Ohm
Short Circuits Protection	10A 500V, Cartridge Fuse g1 or N conforming to IEC 337-1
Terminal Reference	Conforming to CENELEC EN 50013
Connections	On Screw with non loosable plate lamp Sec. 2.5mm ² max. (14 AWG)
Contact Operation	Self Cleaning type, Slow action, Positive Opening
Operation Frequency	3600 Operations per hour
Utilization Category	AC 15 (DC 13)

Rated Power	DC Supply			
Conforming to IEC 60947-5-1	Power broken in watts			
Load factor : 0.5	for 1 million operations			
AC Supply (50/60 Hz)	Voltage	24V	48V	120V
	Inductive Load	65W	48W	40W

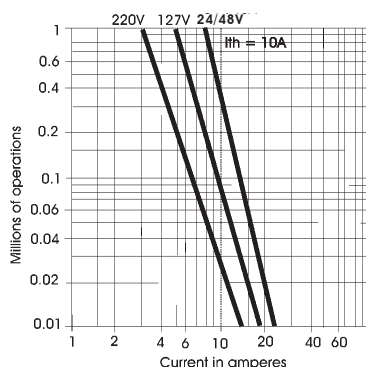


AC Ratings, Inductive - NEMA A600 35% Power Factor

Volts	Make Amperes	VA	Break Amperes	VA	Continuous carrying Amperes	Resistive 75% Power factor Make, Break & continuous Amperes
120	60	7200	6	720	10	10
240	30	7200	3	720	10	10
480	15	7200	1.5	720	10	10
600	12	7200	1.2	720	10	10

DC Ratings, NEMA Type Q600 Inductive and resistive

Volts	Make & Break (Amp.)	Continuous (Amp.)
125	0.55	2.5
250	0.27	2.5
600	0.10	2.5



Control & Signalling Units ϕ 22.5mm (fixing)

Non-Illuminated Push Buttons (Type RB2-B)

(Control Units with chromium plated metal bezel)

Operating Heads for Push Buttons, Spring Return - IP65

Description	Knob Size	Colour	
FLUSH PUSH BUTTON SPRING RETURN		○ WHITE	RB2-BA1
		● BLACK	RB2-BA2
		● GREEN	RB2-BA3
		● RED	RB2-BA4
		● YELLOW	RB2-BA5
		● BLUE	RB2-BA6
		↑ BLACK ARROW ON WHITE BASE	RB2-BA334
		○ WHITE ARROW ON BLACK BASE	RB2-BA335
PROJECTING PUSH BUTTON SPRING RETURN		○ WHITE	RB2-BL1
		● BLACK	RB2-BL2
		● GREEN	RB2-BL3
		● RED	RB2-BL4
		● YELLOW	RB2-BL5
		● BLUE	RB2-BL6
BOOTED PUSH BUTTON SPRING RETURN IP66		○ WHITE	RB2-BP1
		● BLACK	RB2-BP2
		● GREEN	RB2-BP3
		● RED	RB2-BP4
		● YELLOW	RB2-BP5
		● BLUE	RB2-BP6
FLUSH PUSH BUTTON SPRING RETURN WITH TRANSPARENT BOOT IP66		○ WHITE	RB2-BA18
		● BLACK	RB2-BA28
		● GREEN	RB2-BA38
		● RED	RB2-BA48
		● YELLOW	RB2-BA58
		● BLUE	RB2-BA68
MUSHROOM HEAD PUSHBUTTON SPRING RETURN		● BLACK	RB2-BC2
		● GREEN	RB2-BC3
		● RED	RB2-BC4
		● YELLOW	RB2-BC5
		● BLUE	RB2-BC6
MUSHROOM HEAD PUSHBUTTON TURN TO RELEASE	ϕ 40mm	● RED	RB2-BR4
	ϕ 60mm	● RED	RB2-BS44
MUSHROOM HEAD PUSHBUTTON KEY RELEASE - RAAS KEY NO. 455	ϕ 40mm	● RED	RB2-BS54
	ϕ 60mm	● RED	RB2-BS64
MUSHROOM HEAD PUSHBUTTON PUSH TO STAY AND PULL TO RELEASE	ϕ 40mm	● RED	RB2-BS14
MUSHROOM HEAD PUSHBUTTON	ϕ 40mm	● RED (Pre Marked)	RB2-BT4
MUSHROOM HEAD PUSHBUTTON	ϕ 40mm	● RED	RB2-BT43

Operating Heads with Black metal bezel

TO ORDER ADD SUFFIX '7' TO ABOVE e.g. RB2-BA334 BECOMES RB2-BA3347



RB2-BA4



RB2-BL4



RB2-BP4



RB2-BA48



RB2-BS14



RB2-BT43



RB2-BA3347

- For legend plates refer page F-9

- For body / contact assemblies refer page F-6

- For accessories refer page F-8, F-9

- For complete assemblies refer page F-10

Control & Signalling Units ϕ 22.5mm (fixing)

Non-Illuminated Double Headed Push Buttons, Selector Switches & Key Switches (Type RB2-B) (Control Units with Chromium plated metal bezel)

Operating Heads for Double Headed Push buttons, Spring Return w/o Pilot Light- IP40

Description	Marking	Colour	Reference
2 FLUSH PUSH BUTTONS W/O PILOT LIGHT	I O	GREEN RED	RB2-BA87



RB2-BA87

Operating Heads for Double Headed Push buttons, With Pilot Light - IP40

1 FLUSH PUSH BUTTON 1 PILOT LIGHT (IN CENTRE) 1 FLUSH PUSH BUTTON	I O	GREEN AMBER RED	RB2BW9
---	--------	-----------------------	--------

Available with assembly unit & with following options :

FILAMENT BULB	CLEAR
NEON BULB	AMBER
LED	AMBER



RB2-BW9

Operating Heads for Selector Switches - IP65

Description	Type	Operator	Reference
2 POSITION	STAY PUT	STANDARD HANDLE	RB2-BD2
		LONG HANDLE	RB2-BJ2
	SPRING RETURN TO CENTRE FROM RIGHT & LEFT	STANDARD HANDLE	RB2-BDR2
		LONG HANDLE	RB2-BJR2
3 POSITION	STAY PUT	STANDARD HANDLE	RB2-BD3
		LONG HANDLE	RB2-BJ3
	SPRING RETURN	STANDARD HANDLE	RB2-BDR3
		LONG HANDLE	RB2-BJR3
	1 SPRING RETURN RIGHT TO CENTRE	STANDARD HANDLE	RB2-BD8
		LONG HANDLE	RB2-BJ8
	1 SPRING RETURN LEFT TO CENTRE	STANDARD HANDLE	RB2-BD7
		LONG HANDLE	RB2-BJ7



RB2-BD•

Operating Heads for Key Switches (Raas Key No. 455) - IP65

Description	Type	Key removal	Reference
2 POSITION	STAY PUT	LH POSITION	RB2-BG2
		RH POSITION	RB2-BG02
		ALL POSITIONS	RB2-BG4
	1 SPRING RETURN RIGHT TO LEFT	LH POSITION	RB2-BG6
3 POSITION	STAY PUT	CENTRE POSITION	RB2-BG3
		LH AND RH POSITION	RB2-BG5
		ALL 3 POSITIONS	RB2-BG0
		RH POSITION	RB2-BG09
		LH POSITION	RB2-BG9
	STAY PUT TO LEFT SPRING RETURN FROM RIGHT TO CENTRE	CENTRE POSITION	RB2-BG8
		CENTRE POSITION	RB2-BG7
	SPRING RETURN TO CENTRE FROM RIGHT & LEFT	CENTRE POSITION	RB2-BG7



RB2-BJ•



RB2-BG•

Operating Heads with Black metal bezel

TO ORDER ADD SUFFIX '7' TO ABOVE e.g. RB2-BG2 BECOMES RB2-BG27

- For legend plates refer page F-9
- For accessories refer page F-8, F-9
- For contact assemblies refer page F-6
- For complete assemblies refer page F-10 & F-11

Control & Signalling Units ϕ 22.5mm (fixing)

Illuminated Push Buttons & Selector Switches (Type RB2-B)

(Signalling Units with Chromium plated metal bezel)



RB2-BW34



RB2-BW14



RB2-BW54



RB2-BK124 /
RB2-BK134



RB2-BW4● /
RB2-BW6●

Operating Heads for Illuminated Push Buttons - IP65

Description	Application	Colour	Reference
FLUSH PUSH BUTTON SPRING RETURN	FOR INCANDESCENT BULBS	○ WHITE	RB2-BW31
		● GREEN	RB2-BW33
		● RED	RB2-BW34
		● AMBER	RB2-BW35
		● BLUE	RB2-BW36
		CLEAR	RB2-BW37
PROJECTING PUSH BUTTON SPRING RETURN	FOR INCANDESCENT BULBS	○ WHITE	RB2-BW11
		● GREEN	RB2-BW13
		● RED	RB2-BW14
		● AMBER	RB2-BW15
		● BLUE	RB2-BW16
		CLEAR	RB2-BW17
FLUSH PUSH BUTTON SPRING RETURN	FOR LED & NEON BULBS*	● GREEN	RB2-BWL33
		● RED	RB2-BWL34
		● AMBER	RB2-BWL35
		● BLUE	RB2-BWL36
PROJECTING PUSH BUTTON SPRING RETURN	FOR LED & NEON BULBS*	● GREEN	RB2-BWL13
		● RED	RB2-BWL14
		● AMBER	RB2-BWL15
		● BLUE	RB2-BWL16
BOOTED TYPE FLUSH PUSH BUTTON ILLUMINATED TYPE	FOR INCANDESCENT BULBS	○ WHITE	RB2-BW51
		● GREEN	RB2-BW53
		● RED	RB2-BW54
		● AMBER	RB2-BW55
		● BLUE	RB2-BW56
		CLEAR	RB2-BW57

Operating Heads for Illuminated Selector Switches - IP65

Description	Type	Colour	Reference
2 POSITION	STAY PUT	● GREEN	RB2-BK123
		● RED	RB2-BK124
		● AMBER	RB2-BK125
3 POSITION	STAY PUT	● GREEN	RB2-BK133
		● RED	RB2-BK134
		● AMBER	RB2-BK135

Operating Heads for Illuminated ϕ 40mm Mushroom Head Operator

Description	Type	Colour	Reference
2 POSITION MOMENTARY		● RED	RB2-BW44
		● GREEN	RB2-BW43
2 POSITION MAINTAINED		● RED	RB2-BW64
		● GREEN	RB2-BW63

Operating Heads with Black metal bezel

TO ORDER ADD SUFFIX '7' TO ABOVE e.g. RB2-BW31 BECOMES RB2-BW317

- '*' Blue colour is not available in Neon
- For legend plates refer page F-9
- For accessories refer page F-8, F-9
- For contact assemblies refer page F-6
- For complete assemblies refer page F-11

Control & Signalling Units ϕ 22.5mm (fixing)

Assemblies for Illuminated, Non-Illuminated type Push Buttons & Selector Switches (Type RB2-B)



RB2-BZ10*

Body assemblies with fixing collar & contact blocks (screw clamp terminal connections)

Description	Contact	Type	Reference
FOR PUSHBUTTONS, SELECTOR AND KEY SWITCHES	NO	STANDARD	RB2-BZ101
	NC	STANDARD	RB2-BZ102
	NO+NO	STANDARD	RB2-BZ103
	NC+NC	STANDARD	RB2-BZ104
	NO+NC	STANDARD	RB2-BZ105
	NO	GOLD FLASH	RB2-BZ1016
	NC	GOLD FLASH	RB2-BZ1026
	NO+NO	GOLD FLASH	RB2-BZ1036
	NC+NC	GOLD FLASH	RB2-BZ1046
	NO+NC	GOLD FLASH	RB2-BZ1056

Additional / replacement Contact Blocks

Description	Contact	Type	Reference
FOR MAKING UP BODY ASSEMBLIES WITH 3, 4, 5 OR MAXIMUM OF 6 CONTACT BLOCKS OR REPLACING 1 st OR 2 nd CONTACT	NO	STANDARD	RB2-BE101
	NC	STANDARD	RB2-BE102
	NO	GOLD FLASH	RB2-BE1016
	NC	GOLD FLASH	RB2-BE1026



RB2-BE10*

Body assemblies for illuminated Push Buttons & Selectors with or w/o Contacts

Description	Supply Voltage	Contact	Colour	Reference
DIRECT BA 9s FILAMENT BULB* SUPPLIED	12V / 24V / 48V / 110V / 130V (AC)(DC) ■ ○	NO + NC		RB2-BW065
		W/O CONTACT BLOCKS		RB2-BW06
THROUGH RESISTOR BA 9s, 130V FILAMENT BULB SUPPLIED	220V (AC)(DC)	NO + NC		RB2-BW075
		W/O CONTACT BLOCKS		RB2-BW07
THROUGH RESISTOR & DIODE BA 9s 130V BULB SUPPLIED	240V (AC)	NO + NC		RB2-BWD075
		W/O CONTACT BLOCKS		RB2-BWD07
DIRECT BA 9s NEON BULB SUPPLIED	220V / 380V / 415V (AC)(DC) ■	NO + NC	● Green	RB2-BWN0635
			Natural	RB2-BWN0655
		W/O CONTACT BLOCKS	● Green	RB2-BWN063
			Natural	RB2-BWN065
WITH INTEGRAL CIRCUIT & CLUSTER LED	12V, 24V 48V, 110V (AC)(DC) 240V (AC) 220V (DC) ■	NO + NC	● Green	RB2-BWL735
			● Red	RB2-BWL745
			● Orange	RB2-BWL755
			● Blue	RB2-BWL765
		W/O CONTACT BLOCKS	● Green	RB2-BWL73
			● Red	RB2-BWL74
			● Orange	RB2-BWL75
			● Blue	RB2-BWL76



RB2-BW06*



RB2-BWL7●

- ○ Body assemblies (suitable for bulb 2.6W max.) upto 230V max. available without bulb
- * Bulb rating 12V to 130V, 2.6W (max.);
- For accessories refer page F-8, F-9
- ■ Please mention voltage while ordering
- For complete assemblies refer page F-10 & F-11

Control & Signalling Units ϕ 22.5mm (fixing)

Pilot Light Heads & Bodies (Type RB2-B)

Pilot Light Heads

Description	Colour	Reference
FOR INCANDESCENT BULBS	○ WHITE	RB2-BV01
	● GREEN	RB2-BV03
	● RED	RB2-BV04
	● AMBER	RB2-BV05
	● BLUE	RB2-BV06
	CLEAR	RB2-BV07
HIGH CONTRAST, FOR USE WITH NEON BULBS** OR LEDs	● GREEN	RB2-BVL03
	● RED	RB2-BVL04
	● AMBER	RB2-BVL05
	● BLUE	RB2-BVL06*



RB2-BV04



RB2-BV6



RB2-BVN6●



RB2-BVL7●



RCB7-IVL-74

Complete Pilot Light Bodies

Supply	Supply voltage	Colour	Reference
DIRECT BA 9s FILAMENT BULB* SUPPLIED	12V / 24V / 48V / 110V / 130V (AC)(DC)■○	-	RB2-BV6
THROUGH RESISTOR BA 9s, 130V FILAMENT BULB SUPPLIED	220V (AC)(DC)	-	RB2-BV7
THROUGH RESISTOR & DIODE BA 9s, 130V FILAMENT BULB SUPPLIED	240V (AC)	-	RB2-BVD7
VIA INTEGRAL TRANSFORMER 1.2VA BA 9s, 6V FILAMENT BULB SUPPLIED	110V>6V (AC)	-	RB2-BV3
	220V / 240V>6V (AC)	-	RB2-BV4
DIRECT BA 9s, NEON BULB SUPPLIED	220V / 380V / 415V (AC)(DC)■	● GREEN	RB2-BVN63
		● RED	RB2-BVN64
		● AMBER	RB2-BVN65
INTEGRAL CIRCUIT & CLUSTER LED	12V, 24V, 48V 110VAC, 110V DC 220V (DC) 240V (AC)■	● GREEN	RB2-BVL73
		● RED	RB2-BVL74
		● AMBER	RB2-BVL75
		● BLUE	RB2-BVL76

Integrated LED Pilot Lamps❖

Supply	Supply voltage	Colour	Reference
INTEGRATED LED PILOT LAMPS AT 240V AC & 220V DC AT 110V, 48V, 24V, & 12V AC/DC, CIRCUITS	12V, 24V, 48V (AC)(DC) 110V (AC) 110V (DC) 220V (DC) 240V (AC)	○ WHITE	RCB7-IVL-71
		● GREEN	RCB7-IVL-73
		● RED	RCB7-IVL-74
		● AMBER	RCB7-IVL-75
		● BLUE	RCB7-IVL-76
		CLEAR	RCB7-IVL-77
		● YELLOW	RCB7-IVL-78

- ○ Body assemblies (suitable for bulb 2.6W max.) upto 230V max. available without bulb
- * Bulb rating 12V to 130V, 2.6W (max.)
- ** not available in Neon Bulbs
- ■ Please mention voltage while ordering
- For accessories refer page F-8, F-9
- For legend plates refer page F-9
- For complete assemblies refer page F-11
- ❖ UL approved

Control & Signalling Units ϕ 22.5mm (fixing)

Accessories

Bulbs



RL1-CF■



RL1-CN●■



RB2-BV004



RB2-BP004



RC-S

Description	Voltage	Colour	Reference
INCANDESCENT FILAMENT LAMP (Different wattage for various voltages)	6V, 12V, 24V, 48V, 130V	CLEAR	RL1-CF■
NEON BA 9s	220V, 380V, 415V	● GREEN	RL1-CN3■
		● NATURAL	RL1-CN■

Lenses

Description	Colour	Reference
SET OF LENSES (ONE INNER DIFFUSER & ONE OUTER LENS) FOR PILOT LAMP HEAD	○ WHITE	RB2-BV001
	● GREEN	RB2-BV003
	● RED	RB2-BV004
	● AMBER	RB2-BV005
	● BLUE	RB2-BV006
	CLEAR	RB2-BV007
	SET OF LENS FOR (ONE INNER DIFFUSER & ONE OUTER LENS) FOR ILLUMINATING ACTUATOR	○ WHITE
● GREEN		RB2-BW003
● RED		RB2-BW004
● AMBER		RB2-BW005
● BLUE		RB2-BW006
CLEAR		RB2-BW007
LENSES FOR ILLUMINATING LED & NEON* ACTUATOR (WITHOUT INNER DIFFUSER)		● GREEN
	● RED	RB2-BWL004
	● AMBER	RB2-BWL005
	● BLUE	RB2-BWL006

Boots

Description	Colour	Reference
SILICON RUBBER BOOTS (FOR RB2-BP) SUITABLE FOR OIL & HUMID CONDITION	○ WHITE	RB2-BP001
	● BLACK	RB2-BP002
	● GREEN	RB2-BP003
	● RED	RB2-BP004
	● YELLOW	RB2-BP005
	● BLUE	RB2-BP006
BOOTS SUITABLE FOR NON-ILLUMINATING FLUSH PUSHBUTTONS (RB2-BA)	CLEAR	RC-S
BOOTS SUITABLE FOR ILLUMINATED FLUSH PUSHBUTTONS (RB2-BW)	CLEAR	RC-L

- '■' Replace with voltage
- '**' Blue lense for neon type lamp not available

Control & Signalling Units ϕ 22.5mm (fixing)

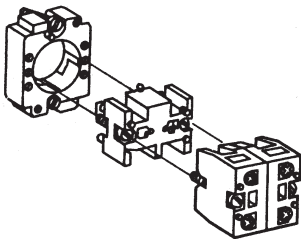
Accessories & Legend Plates



RB2-B



RB2-RPX



RB2-BZ21



RB2-QC12



RB2 - K455



RB2-BY
30mm



RB2-PY9330

Other Accessories & Tools

Description	Reference
FIXING COLLAR	RB2-B
RESET PLUNGER	RB2-RPX
BULB EXTRACTOR FOR BA 9s BULBS	RBF-X13
QUICK CONNECTOR FOR NO / NC CONTACT	RB2-QC12
SPARE / REPLACEMENT KEYS FOR KEY OPERATING UNITS (RAAS KEY NO. 455)	RB2-K455
PADLOCKING ATTACHMENT (MAKES FLUSH OPERATOR INACCESSIBLE)	RB2-BZ6
PANEL ADPATOR (CONVERTS 30mm HOLE TO 22mm HOLE)	RB2-BZ41
ADD ON PUSH-ON/OFF MOUNTING MECHANISM	RB2-BZ21

Legend Plates *

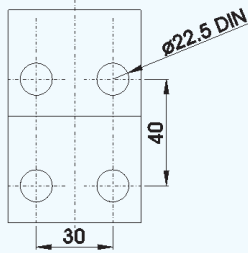
Standard Text	Reference
BLANK	RB2-BY2301
START	RB2-BY2303
FORWARD	RB2-BY2305
UP	RB2-BY2307
ON	RB2-BY2311
OPEN	RB2-BY2313
AUTO	RB2-BY2315
RESET	RB2-BY2323
SLOW	RB2-BY2327
AUTO-HAND	RB2-BY2364
STOP	RB2-BY2304
REVERSE	RB2-BY2306
DOWN	RB2-BY2308
OFF	RB2-BY2312
CLOSE	RB2-BY2314
HAND	RB2-BY2316
INCH	RB2-BY2321
FAST	RB2-BY2328
AUTO-O-HAND	RB2-BY2385
HAND OFF AUTO	RB2-BY2387
EMERGENCY STOP	RB2-BY2330
LOW	RB2-BY2333
HIGH	RB2-BY2334
HIGH LOW	RB2-BY2335
OFF ON	RB2-BY2336
STOP START	RB2-BY2337
UP DOWN	RB2-BY2338
EMERGENCY STOP PLASTIC ϕ 60mm	RB2-PY9330
EMERGENCY STOP PLASTIC ϕ 90mm	RB2-PY8330
EMERGENCY STOP ALUMINIUM ϕ 60mm	RB2-AY9330
EMERGENCY STOP ALUMINIUM ϕ 90 mm	RB2-AY8330

- ■ without any text

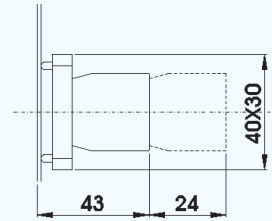
- * Available in Plastic also. Replace 'BY' with 'PY'

Control & Signalling Units ϕ 22.5mm (fixing)

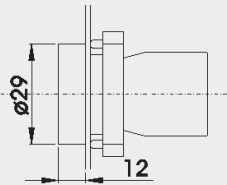
Dimensions / Complete Units' Reference



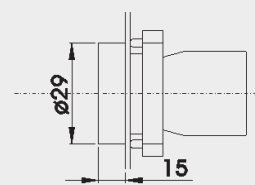
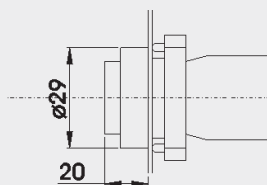
PANEL CUT-OUT
(Thickness: 6mm max.)



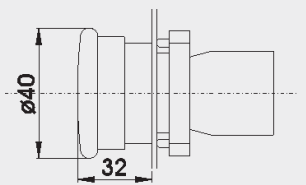
RB2-BE10 \diamond +RB2-B = RB2-BZ10 \diamond



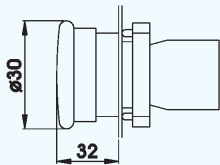
RB2-BA \bullet +RB2-BZ10 \diamond =RCB2-BA \bullet \diamond RB2-BL \bullet +RB2-BZ10 \diamond =RCB2-BL \bullet \diamond
RB2-BA334+RB2-BZ10 \diamond =RB2-BA334 \diamond



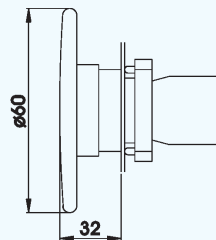
RB2-BP \bullet +RB2-BZ10 \diamond =RCB2-BP \bullet \diamond
RB2-BA \bullet 8+RB2-BZ10 \diamond =RCB2-BA \bullet 8 \diamond



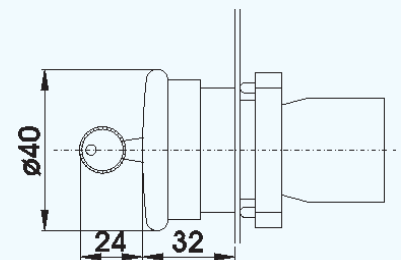
RB2-BC \bullet +RB2-BZ10 \diamond =RCB2-BC \bullet \diamond
RB2-BS54+RB2-BZ10 \diamond =RCB2-BS54 \diamond
RB2-BT4+RB2-BZ10 \diamond =RCB2-BT4 \diamond



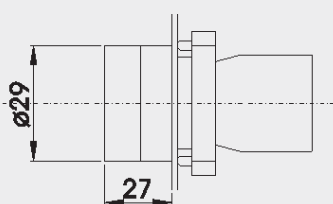
RB2-BS44+RB2-BZ10 \diamond =RCB2-BS44 \diamond



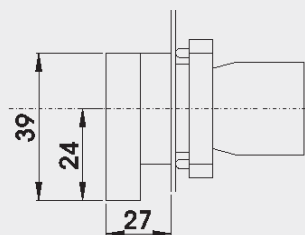
RB2-BR4+RB2-BZ10 \diamond =RCB2-BR4 \diamond
RB2-BS64+RB2-BZ10 \diamond =RCB2-BS64 \diamond



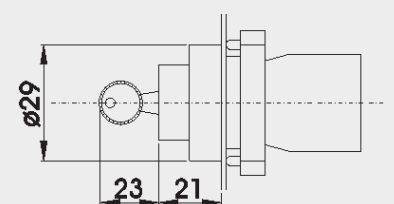
RB2-BS14+RB2-BZ10 \diamond =RCB2-BS14 \diamond



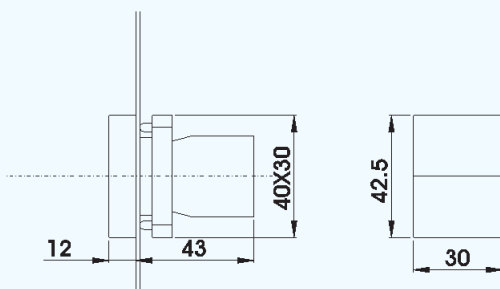
RB2-BD2+RB2-BZ10 \diamond =RCB2-BD2 \diamond
RB2-BD3+RB2-BZ10 \diamond =RCB2-BD3 \diamond



RB2-BJ2+RB2-BZ10 \diamond =RCB2-BJ2 \diamond
RB2-BJ3+RB2-BZ10 \diamond =RCB2-BJ3 \diamond



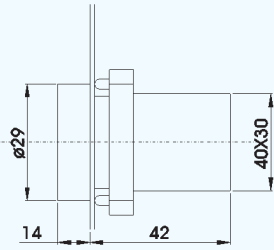
RB2-BG \diamond +RB2-BZ10 \diamond =RCB2-BG \diamond \diamond
Replace \diamond with code for position of Key removal & operation pattern



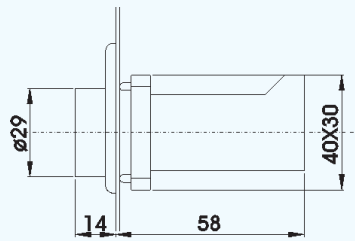
RB2-BA87+RB2-BZ10 \diamond =RCB2-BA87 \diamond

- Replace \diamond with codes for type of contacts (See page F-6) & \bullet with colour codes (see page F-3 & F-4)
- For non-illuminated push button heads, selector switches & key switches refer page F-3 & F-4

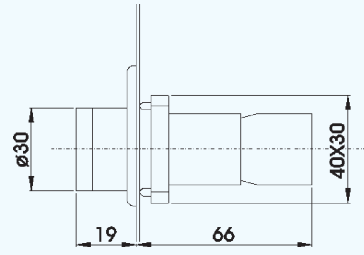
Dimensions / Complete Units' Reference



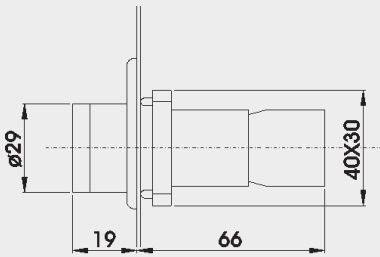
RB2-BV0●+RB2-BV6 = RCB2-BV6●
 RB2-BV0●+RB2-BVN6 = RCB2-BVN6●
 RB2-BV0●+RB2-BV7 = RCB2-BV7●
 RB2-BV0●+RB2-BVD7 = RCB2-BVD7●
 RB2-BVL0●+RB2-BVL7● = RCB2-BVL7●



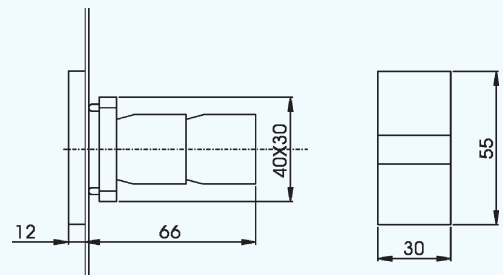
RB2-BV0●+RB2-BV3 = RCB2-BV3●
 RB2-BV0●+RB2-BV4 = RCB2-BV4●



RB2-BW5●+RB2-BW06+RB2-BE10❖ = RCB2-BW5●6❖
 RB2-BW5●+RB2-BW07+RB2-BE10❖ = RCB2-BW5●7❖
 RB2-BW5●+RB2-BWD07+RB2-BE10❖ = RCB2-BWD5●7❖
 RB2-BW5●+RB2-BW06+RB2-BE10❖ = RCB2-BW5●6❖



RB2-BW3●+RB2-BW06+RB2-BE10❖ = RCB2-BW3●6❖
 RB2-BW3●+RB2-BW07+RB2-BE10❖ = RCB2-BW3●7❖
 RB2-BW3●+RB2-BWD07+RB2-BE10❖ = RCB2-BWD3●7❖
 RB2-BWL3●+RB2-BWN06●+RB2-BE10❖ = RCB2-BWN316❖
 RB2-BWL3●+RB2-BWL7●+RB2-BE10❖ = RCB2-BWL3●7❖
 RB2-BW1●+RB2-BW06+RB2-BE10❖ = RCB2-BW1●6❖
 RB2-BW1●+RB2-BW07+RB2-BE10❖ = RCB2-BW1●7❖
 RB2-BW1●+RB2-BWD07+RB2-BE10❖ = RCB2-BWD1●7❖
 RB2-BWL1●+RB2-BWN06●+RB2-BE10❖ = RCB2-BWN3●6❖
 RB2-BWL1●+RB2-BWL7●+RB2-BE10❖ = RCB2-BWL3●7❖






RB2-BW9+RB2-BW06+RB2-BE10❖ = RCB2-BW96❖
 RB2-BW9+RB2-BW07+RB2-BE10❖ = RCB2-BW97❖
 RB2-BW9+RB2-BWD07+RB2-BE10❖ = RCB2-BWD97❖
 RB2-BW9+RB2-BWN065+RB2-BE10❖ = RCB2-BWN965❖
 RB2-BW9+RB2-BWL75+RB2-BE10❖ = RCB2-BWL975❖

- Replace '❖' with codes for type of contacts (See page F-6) & '●' with colour codes (see page F-5 & F-6)
- For illuminated push button heads, illuminated selector switches please refer page F-5
- For pilot lamp head please refer page F-7 & for double headed push button with pilot lamp please refer page F-6

Control Stations



















Characteristics

General Characteristics	
Products	Control Stations
Reference Standard	IEC 60947-5-1, EN 60947-5-1, IEC 337-1, UL 508, CSA C-22-2 n° 14
Approval	  & 
Protection Degree	IP 65 / IP 66 (as per IEC), NEMA 4 / 4X (special version)
Ambient Temperature	-40°C ~ + 70°C (Storage) -25°C ~ +70°C (Operation)
Vibration Resistance	15g (40 To 500 Hz) conforming to IEC 68-2-6
Shock Resistance	Push Buttons : 70g, Mushroom Head Push Buttons : 15g, Selector Switches : 200g conforming to IEC 68-2-27
Material and Colour	Thermoplastic - grey lid and black base for 1,2,3,4 way, yellow lid & black base for one way Aluminium Die Cast - grey lid and dark grey base
Cable Entry	Knock-outs provided



Stations for customer assembly

Empty Control Station Enclosures for customer assembly in plastic & metal

Description	No. of Holes	Colour	Reference
CONTROL STATION PLASTIC ENCLOSURE	1	LID 	RC-1P
		BASE 	
	2	LID 	RC-2P
		BASE 	
	3	LID 	RC-3P
		BASE 	
	4	LID 	RC-4P
		BASE 	
1	LID 	RC-1PY	
	BASE 		
CONTROL STATION METAL ENCLOSURE	1	LID 	RC-1M
		BASE 	
	2	LID 	RC-2M
		BASE 	
	3	LID 	RC-3M
		BASE 	
	4	LID 	RC-4M
		BASE 	

Control Stations

Stations for customer assembly

Plastic Operating Heads for use with RC•P & RC•M enclosures - IP65



RP2-BA334



RP2-BL4

Description	Knob Size	Colour	Reference
FLUSH PUSH BUTTON SPRING RETURN		○ WHITE	RP2-BA1
		● BLACK	RP2-BA2
		● GREEN	RP2-BA3
		● RED	RP2-BA4
		● YELLOW	RP2-BA5
		● BLUE	RP2-BA6
		↑ BLACK ARROW ON WHITE	RP2-BA334
		↓ WHITE ARROW ON BLACK	RP2-BA335
PROJECTING PUSH BUTTON SPRING RETURN		○ WHITE	RP2-BL1
		● BLACK	RP2-BL2
		● GREEN	RP2-BL3
		● RED	RP2-BL4
		● YELLOW	RP2-BL5
		● BLUE	RP2-BL6
MUSHROOM HEAD PUSH BUTTON SPRING RETURN		● BLACK	RP2-BC2
		● GREEN	RP2-BC3
	φ40mm	● RED	RP2-BC4
		● YELLOW	RP2-BC5
		● BLUE	RP2-BC6
	MUSHROOM HEAD PUSH BUTTON TURN TO RELEASE	φ30mm	● RED
φ40mm		● RED	RP2-BS54
φ60mm		● RED	RP2-BS64
MUSHROOM HEAD PUSHBUTTON	φ40mm	● RED	RP2-BS14

Plastic Selector Heads for use with RC•P & RC•M enclosures - IP65



RP2-BD•

Description	Type	Operator	Reference
2 POSITION	STAY PUT	STANDARD HANDLE	RP2-BD2
		LONG HANDLE	RP2-BJ2
3 POSITION	STAY PUT	STANDARD HANDLE	RP2-BD3
		LONG HANDLE	RP2-BJ3
	SPRING RETURN	STANDARD HANDLE	RP2-BDR3
		LONG HANDLE	RP2-BJR3
3 POSITION	1 SPRING RETURN RIGHT TO CENTRE	STANDARD HANDLE	RP2-BD8
		LONG HANDLE	RP2-BJ8
	1 SPRING RETURN LEFT TO CENTRE	STANDARD HANDLE	RP2-BD7
		LONG HANDLE	RP2-BJ7

Plastic Key Selector Heads for use with RC•P & RC•M enclosures - IP65



RP2-BG•

Description	Type	Key Removal	Reference
2 POSITION KEY SWITCH (RAAS KEY NO. 455)	STAY PUT	LH POSITION	RP2-BG2
		RH POSITION	RP2-BG02
		ALL POSITIONS	RP2-BG4
3 POSITION	STAY PUT	CENTRE POSITION	RP2-BG3
		LH AND RH POSITION	RP2-BG5
		ALL 3 POSITIONS	RP2-BG0
		RH POSITION	RP2-BG09
		LH POSITION	RP2-BG9
	BOTH SIDE SPRING RETURN TO CENTRE	CENTRE POSITION	RP2-BG7
	STAY PUT TO LEFT SPRING RETURN FROM RIGHT TO CENTRE	CENTRE POSITION	RP2-BG8

Control Stations

Stations for customer assembly



RB2-BE•BP



RM2-BA4



RM2-BA335



RM2-BL4



RM2-BP4



RM2-BS54



RM2-BS14

Contact Blocks for RC•P enclosures - IP65

Description	Contact	Type	Reference
	NO	STANDARD	RB2-BE101-BP
	NC	STANDARD	RB2-BE102-BP
	NO	GOLD FLASH	RB2-BE1016-BP
	NC	GOLD FLASH	RB2-BE1026-BP

Metal Operating Heads for use with RC•P & RC•M enclosures - IP65

Description	Knob Size	Colour	Reference
FLUSH PUSH BUTTON SPRING RETURN		○ WHITE	RM2-BA1
		● BLACK	RM2-BA2
		● GREEN	RM2-BA3
		● RED	RM2-BA4
		● YELLOW	RM2-BA5
		● BLUE	RM2-BA6
		⬆ BLACK ARROW ON WHITE	RM2-BA334
		⬆ WHITE ARROW ON BLACK	RM2-BA335
PROJECTING PUSH BUTTON SPRING RETURN		○ WHITE	RM2-BL1
		● BLACK	RM2-BL2
		● GREEN	RM2-BL3
		● RED	RM2-BL4
		● YELLOW	RM2-BL5
		● BLUE	RM2-BL6
		BOOTED PUSH BUTTON SPRING RETURN IP66	
● BLACK	RM2-BP2		
● GREEN	RM2-BP3		
● RED	RM2-BP4		
● YELLOW	RM2-BP5		
● BLUE	RM2-BP6		
FLUSH PUSH BUTTON SPRING RETURN WITH TRANSPARENT BOOT IP66			
		● BLACK	RM2-BA28
		● GREEN	RM2-BA38
		● RED	RM2-BA48
		● YELLOW	RM2-BA58
		● BLUE	RM2-BA68
MUSHROOM HEAD PUSHBUTTON SPRING RETURN	φ40mm	● BLACK	RM2-BC2
		● GREEN	RM2-BC3
		● RED	RM2-BC4
		● YELLOW	RM2-BC5
		● BLUE	RM2-BC6
		MUSHROOM HEAD PUSH BUTTON TURN TO RELEASE	φ30mm
φ40mm	● RED		RM2-BS54
φ60mm	● RED		RM2-BS64
MUSHROOM HEAD PUSHBUTTON KEY RELEASE - RAAS KEY NO. 455	φ40mm	● RED	RM2-BS14
MUSHROOM HEAD PUSHBUTTON PUSH TO STAY - PULL TO RELEASE	φ40mm	● RED	RM2-BT4
		● RED (Pre-marked)	RM2-BT43

Operating Heads with Black metal bezel

TO ORDER ADD SUFFIX '7' TO ABOVE e.g. RM2-BA1 BECOMES RM2-BA17

Control Stations

Stations for customer assembly



RM2-BD●



RB2-BJ●



RB2-BG●



RB2-BE10● -BM

Metal Selector Heads for use with RC●P & RC●M enclosures - IP65

Description	Type	Operator	Reference
2 POSITION	STAY PUT	STANDARD HANDLE	RM2-BD2
		LONG HANDLE	RM2-BJ2
3 POSITION	STAY PUT	STANDARD HANDLE	RM2-BDR2
		LONG HANDLE	RM2-BJR2
	SPRING RETURN	STANDARD HANDLE	RM2-BD3
		LONG HANDLE	RM2-BJ3
3 POSITION	1 SPRING RETURN RIGHT TO CENTRE	STANDARD HANDLE	RM2-BD8
		LONG HANDLE	RM2-BJ8
	1 SPRING RETURN LEFT TO CENTRE	STANDARD HANDLE	RM2-BD7
		LONG HANDLE	RM2-BJ7

Metal Key Selector Heads for use with RC●P & RC●M enclosures - IP65

Description	Key Removal	Key Removal	Reference
2 POSITION KEY SWITCH (RAAS KEY NO. 455)	STAY PUT	LH POSITION	RM2-BG2
		RH POSITION	RM2-BG02
		ALL POSITIONS	RM2-BG4
	1 SPRING RETURN RIGHT TO LEFT	LH POSITION	RM2-BG6
3 POSITION	STAY PUT	CENTRE POSITION	RM2-BG3
		LH AND RH POSITION	RM2-BG5
		ALL 3 POSITIONS	RM2-BG0
		RH POSITION	RM2-BG09
	BOTH SIDE SPRING RETURN TO CENTRE	LH POSITION	RM2-BG9
		CENTRE POSITION	RM2-BG7
		STAY PUT TO LEFT SPRING RETURN FROM RIGHT TO CENTRE	CENTRE POSITION

Contact Blocks Base Mounted for use with RC●M enclosures - IP65

Description	Contact	Type	Reference
Contact Blocks	NO	STANDARD	RB2-BE101-BM
	NC	STANDARD	RB2-BE102-BM
	NO	GOLD FLASH	RB2-BE1016-BM
	NC	GOLD FLASH	RB2-BE1026-BM

Dimensions

	Plastic				Metal			
	1 Hole (inch/mm)	2 Hole (inch/mm)	3 Hole (inch/mm)	4 Hole (inch/mm)	1 Hole (inch/mm)	2 Hole (inch/mm)	3 Hole (inch/mm)	4 Hole (inch/mm)
H	2.1" / 51	2.1" / 51	2.1" / 51	2.1" / 51	2.1" / 51	2.1" / 51	2.1" / 51	2.1" / 51
W	2.68" / 68	2.68" / 68	2.68" / 68	2.68" / 68	2.68" / 68	2.68" / 68	2.68" / 68	2.68" / 68
L	2.91" / 74	4.09" / 104	5.28" / 134	6.46" / 164	2.91" / 74	4.13" / 105	5.28" / 134	6.46" / 164
W1	2.13" / 54	2.13" / 54	2.13" / 54	2.13" / 54	2.13" / 54	2.13" / 54	2.13" / 54	2.13" / 54
L1	1.5" / 38	2.68" / 68	2.68" / 68	5.04" / 128	1.31" / 46	3.07" / 78	4.25" / 108	5.43" / 138

Control & Signalling Units ϕ 22.5mm (fixing)

Push Button (Plastic Series) without contact elements



RCP2-BA3



RCP2-BL4



RCP2-BC6



RCP2-BS54



RCP2-BS14



RCP2-BW356

Push Buttons Actuators with Carrier - Non-Illuminated

Description	Knob Size	Colour	Reference
FLUSH PUSH BUTTON SPRING RETURN		○ WHITE	RCP2-BA1
		● BLACK	RCP2-BA2
		● GREEN	RCP2-BA3
		● RED	RCP2-BA4
		● YELLOW	RCP2-BA5
		● BLUE	RCP2-BA6
PROJECTING PUSH BUTTON		○ WHITE	RCP2-BL1
		● BLACK	RCP2-BL2
		● GREEN	RCP2-BL3
		● RED	RCP2-BL4
		● YELLOW	RCP2-BL5
		● BLUE	RCP2-BL6
MUSHROOM HEAD PUSHBUTTON SPRING RETURN		● BLACK	RCP2-BC2
		● GREEN	RCP2-BC3
		● RED	RCP2-BC4
		● YELLOW	RCP2-BC5
		● BLUE	RCP2-BC6
		MUSHROOM HEAD PUSHBUTTON STAY PUT (PRESS TO LOCK TURN TO RELEASE)	ϕ 30mm
ϕ 40mm	● RED		RCP2-BS54
ϕ 60mm	● RED		RCP2-BS64
MUSHROOM HEAD PUSHBUTTON PUSH TO STAY KEY TO RELEASE		● RED	RCP2-BS14

Push Buttons Actuators -Illuminated Flush without Series Resistor

Description	Knob Size	Colour	Reference
ILLUMINATED ACTUATOR, FLUSH (WITH BA9 FILAMENT BULB) 12V, 24V, 48V, 110V AC/DC		○ WHITE	RCP2-BW316
		● GREEN	RCP2-BW336
		● RED	RCP2-BW346
		● AMBER	RCP2-BW356
		● BLUE	RCP2-BW366
		○ CLEAR	RCP2-BW376
ILLUMINATED ACTUATOR, FLUSH (WITH BA9 NEON BULB) 220V, 380V, 415V AC/DC		● GREEN	RCP2-BWN336
		● RED	RCP2-BWN346
		● AMBER	RCP2-BWN356

Push Buttons Actuators -Illuminated Flush with Series Resistor

Description	Knob Size	Colour	Reference
ILLUMINATED ACTUATOR, FLUSH (WITH BA9 FILAMENT BULB, 130V) 220V AC/DC		○ WHITE	RCP2-BW317
		● GREEN	RCP2-BW337
		● RED	RCP2-BW347
		● AMBER	RCP2-BW357
		● BLUE	RCP2-BW367
		○ CLEAR	RCP2-BW377

Control & Signalling Units ϕ 22.5mm (fixing)

Push Button (Plastic Series) without contact elements



RCP2-BW357

LED Type Push Buttons Actuators - Illuminated Flush

Description	Knob Size	Colour	Reference
FLUSH ILLUMINATED WITH INTEGRAL CIRCUIT AND CLUSTERED TYPE LED SUITABLE FOR OPERATING AT 240V 220V, 110V, 48V, 24V & 12V		● GREEN	RCP2-BWL337
		● RED	RCP2-BWL347
		● AMBER	RCP2-BWL357
		● BLUE	RCP2-BWL367

Push Buttons Actuators -Illuminated Projecting without Series Resistor

Description	Knob Size	Colour	Reference
ILLUMINATED ACTUATOR, FLUSH (WITH BA9 FILAMENT BULB) 12V, 24V, 48V, 110V AC/DC		○ WHITE	RCP2-BW116
		● GREEN	RCP2-BW136
		● RED	RCP2-BW146
		● AMBER	RCP2-BW156
		● BLUE	RCP2-BW166
		CLEAR	RCP2-BW176
ILLUMINATED ACTUATOR, FLUSH (WITH BA9 NEON BULB) 220V, 380V, 415V AC/DC		● GREEN	RCP2-BWN136
		● RED	RCP2-BWN146
		● AMBER	RCP2-BWN156

Push Buttons Actuators -Illuminated Projecting with Series Resistor

Description	Knob Size	Colour	Reference
ILLUMINATED ACTUATOR, PROJECTING (WITH BA9 FILAMENT BULB, 130V) 220V AC/DC		○ WHITE	RCP2-BW117
		● GREEN	RCP2-BW137
		● RED	RCP2-BW147
		● AMBER	RCP2-BW157
		● BLUE	RCP2-BW167
		CLEAR	RCP2-BW177

LED Type Push Button Actuators -Illuminated Projecting

Description	Knob Size	Colour	Reference
PROJECTING ILLUMINATED ACTUATOR WITH INTEGRAL CIRCUIT & CLUSTER LED, SUITABLE FOR OPERATING AT 240V [■] , 220V [■] , 110V, 48V, 24V & 12V [*]		● GREEN	RCP2-BWL137
		● RED	RCP2-BWL147
		● AMBER	RCP2-BWL157
		● BLUE	RCP2-BWL167

* Type of voltage AC/DC to be specified.

■ Operating voltage in 240V AC and 220V DC.

Control & Signalling Units ϕ 22.5mm (fixing)

Selector Actuators (Plastic Series) without contact elements



RCP2-BD●

Selector Switch Actuator with Carrier

Description	Type	Operator	Reference
2 POSITION	STAY PUT	STANDARD HANDLE	RCP2-BD2
		LONG HANDLE	RCP2-BJ2
	SPRING RETURN	STANDARD HANDLE	RCP2-BDR2
		LONG HANDLE	RCP2-BJR2
3 POSITION	STAY PUT	STANDARD HANDLE	RCP2-BD3
		LONG HANDLE	RCP2-BJ3
	SPRING RETURN	STANDARD HANDLE	RCP2-BDR3
		LONG HANDLE	RCP2-BJR3



RCP2-BJ●

Key Actuators with Carrier

Description	Type	Key removal	Reference
2 POSITION		UNACTUATED POSITION	RCP2-BG2
		BOTH POSITION	RCP2-BG4
		RH POSITIONS	RCP2-BG02
	SPRING RETURN	LH POSITION	RCP2-BG6
3 POSITION		CENTRE OFF POSITION	RCP2-BG3
		LH AND RH POSITION	RCP2-BG5
		ALL POSITIONS	RCP2-BG0
		RH POSITION	RCP2-BG7
		LH POSITION	RCP2-BG9



RCP2-BJ3●

LED Type Pilot Lamp (Integral CKT & Cluster Type)

Description	Knob Size	Colour	Reference
PILOT LIGHT WITH INTEGRAL CIRCUIT & CLUSTER LED, SUITABLE FOR OPERATING AT 240* 220V*, 110V* 48V, 24V & 12V		● GREEN	RCP2-BVL73
		● RED	RCP2-BVL74
		● AMBER	RCP2-BVL75
		● BLUE	RCP2-BVL76
		● CLEAR	RCP2-BVL77

Pilot Lamps with Transformer

Description	Knob Size	Colour	Reference
PILOT LAMP (WITH BA9S FILAMENT BULB) FOR INPUT VOLTAGE 240V AC AND OUTPUT VOLTAGE 6V AC		○ WHITE	RCP2-BV41
		● GREEN	RCP2-BV43
		● RED	RCP2-BV44
		● AMBER	RCP2-BV45
		● BLUE	RCP2-BV46
		● CLEAR	RCP2-BV47
PILOT LAMP (WITH BA9S FILAMENT BULB) FOR INPUT VOLTAGE 110V AC AND OUTPUT VOLTAGE 6V AC		○ WHITE	RCP2-BV31
		● GREEN	RCP2-BV33
		● RED	RCP2-BV34
		● AMBER	RCP2-BV35
		● BLUE	RCP2-BV36
		● CLEAR	RCP2-BV37



RCP2-BV44

* Operating Voltage available in 240V AC, 110V & 220V DC

Control & Signalling Units ϕ 22.5mm (fixing)

Selector Actuators (Plastic Series) without contact elements



RCP2-BV74

Pilot Lamps with Series Resistor

Description	Knob Size	Colour	Reference
PILOT LAMP (WITH BA9S FILAMENT BULB 130V) 220V AC/DC		○ WHITE	RCP2-BV71
		● GREEN	RCP2-BV73
		● RED	RCP2-BV74
		● AMBER	RCP2-BV75
		● BLUE	RCP2-BV76
		CLEAR	RCP2-BV77

Pilot Lamps with Series Resistor & Diode

Description	Knob Size	Colour	Reference
PILOT LAMP (WITH BA9S FILAMENT BULB 130V) 240V AC		○ WHITE	RCP2-BVD71
		● GREEN	RCP2-BVD73
		● RED	RCP2-BVD74
		● AMBER	RCP2-BVD75
		● BLUE	RCP2-BVD76
		CLEAR	RCP2-BVD77

Pilot Lamps without Series Resistor



RCP2-BV64

Description	Knob Size	Colour	Reference
PILOT LAMP (WITH BA9S FILAMENT BULB) 110V, 48V, 24V & 12V AC/DC		○ WHITE	RCP2-BV61
		● GREEN	RCP2-BV63
		● RED	RCP2-BV64
		● AMBER	RCP2-BV65
		● BLUE	RCP2-BV66
		CLEAR	RCP2-BV67
PILOT LAMP WITH BA9S NEON BULB) 220V, 380V & 415V AC/DC		● GREEN	RCP2-BVN63
		● RED	RCP2-BVN64
		● AMBER	RCP2-BVN65

Voltage Code for Pilot Lamps

Voltage Code	12V	24V	48V	110V	220V	240V	380V	415V
AC	JA	BA	EA	FA	MA	UA	QA	NA
DC	JD	BD	ED	FD	MD	-	QD	ND

Notes

Notes